

MONTHLY MEMBERSHIP PROGRESS REPORT

LOCATION INDIA

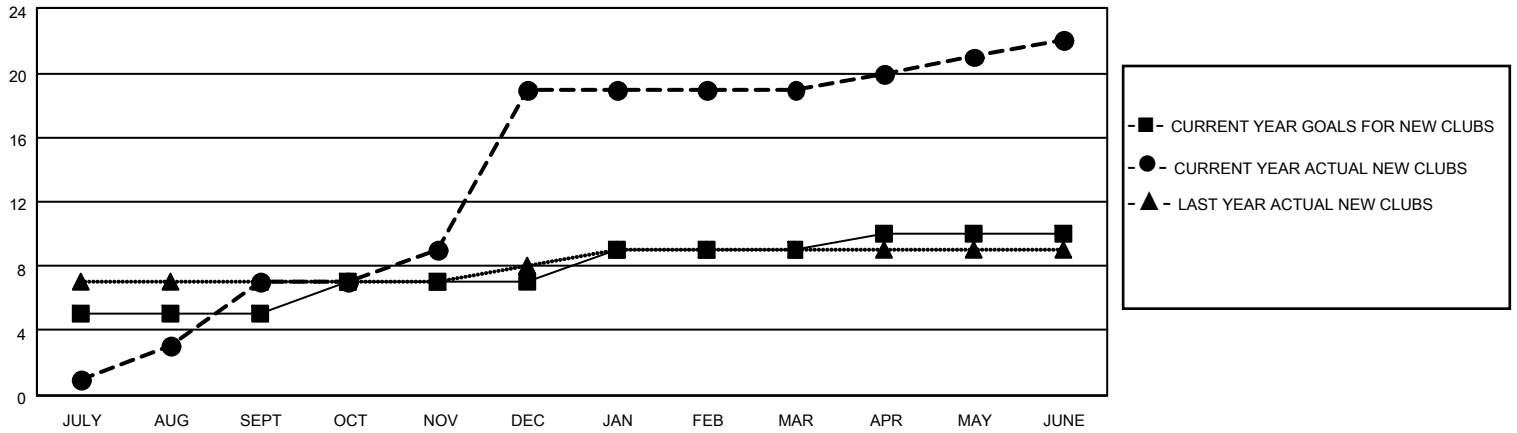
District 322C1

Results as of: 6/30/2021

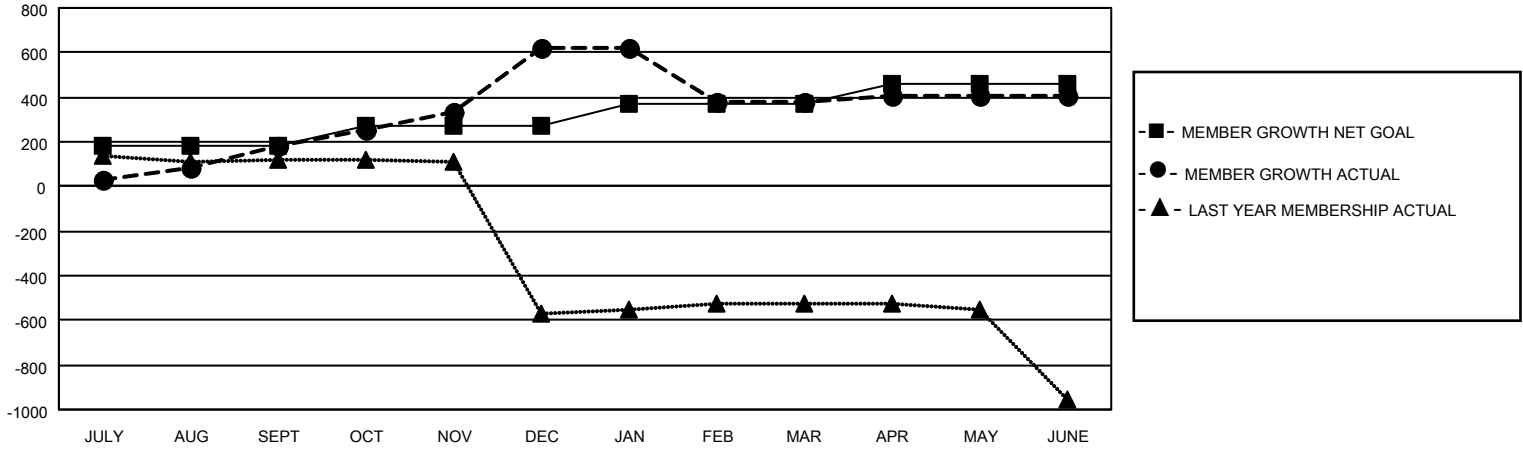
Clubs			
RESULTS FOR 2020-2021			
QUARTER	NEW CLUB GOAL	NEW CLUBS	DROPPED CLUBS
JULY/AUG/SEPT	5	7	0
OCT/NOV/DEC	2	12	0
JAN/FEB/MAR	2	0	16
APR/MAY/JUNE	1	3	0

Members			
RESULTS FOR 2020-2021			
QUARTER	MEMBER GROWTH NET GOAL	MEMBER GROWTH ACTUAL	DROPPED MEMBERS ACTUAL (including transfers)
JULY/AUG/SEPT	179	252	57
OCT/NOV/DEC	93	588	139
JAN/FEB/MAR	102	29	268
APR/MAY/JUNE	88	260	223

GOALS AND ACTUAL NEW CLUBS CUMULATIVE



GOALS AND ACTUAL MEMBERS CUMULATIVE



DROPPED CLUBS: 16	89 CLUBS OF 137 ADDED 1 OR MORE NEW MEMBERS	<p style="text-align: center;"><u>GENDER DISTRIBUTION</u></p> <p>MALE 2,619 (75.48%)</p> <p>FEMALE 851 (24.52%)</p>
<p style="text-align: center;"><u>DROPPED MEMBERS</u></p> <p>DECEASED 38</p> <p>CLUB CANCELLED 247</p> <p>OTHER 402</p> <hr/> <p>TOTAL 687</p>	<p>CLICK HERE FOR CUMULATIVE MEMBERSHIP DATA</p>	<p>TOTAL FAMILY UNIT MEMBERS 1,978</p> <p>FAMILY MEMBERS PAYING HALF DUES 1,204</p>